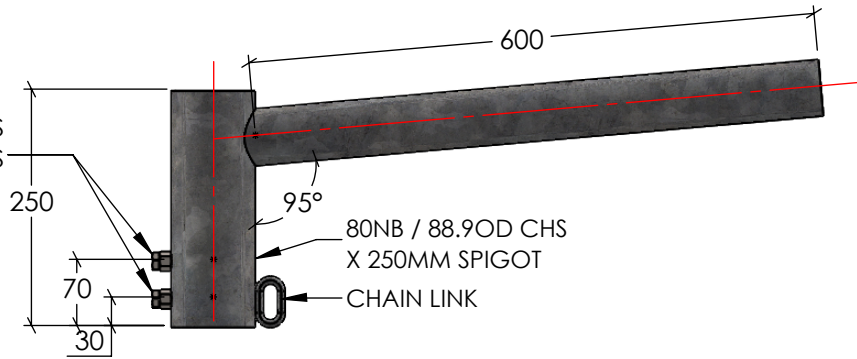
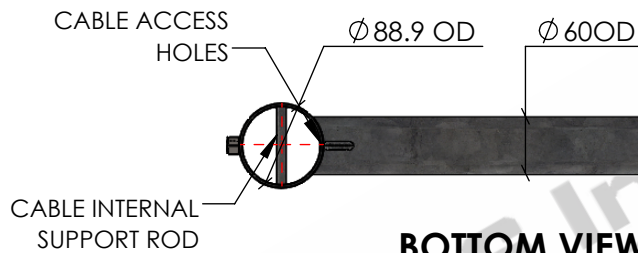


2 X M10 NUTS
& M10 X 30 BOLTS



FRONT VIEW

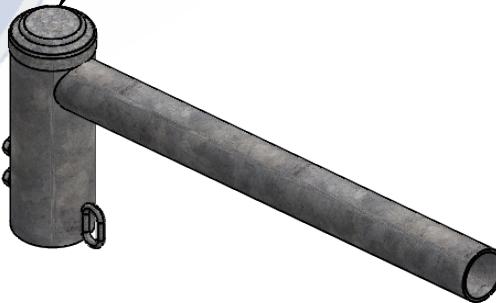
SCALE 1:8



BOTTOM VIEW

SCALE 1:8

KNOCK ON CAP



ISOMETRIC VIEW

SCALE 1:10

STANDARDS

ALL PRODUCTS TO CONFORM TO THE FOLLOWING AUSTRALIAN STANDARDS

- * AS 1554(set) Structural steel welding set.
- * AS 2159: Piling - Design & Installation.
- * AS 2870: Residential slab footings - Construction.
- * AS 3600: Concrete structures.
- * AS 3678: Structural steel - Hot rolled plates, floorplates and slabs.
- * AS 4680: Hot dip galvanized (Zinc) Coatings on fabricated ferrous articles.
- * AS/NZS 4671: Steel reinforcing materials.
- * AS/NZS 4676: Structural design requirements for utility services poles.



G&S Industries
Group of Companies

97 GUTHRIE STREET,
OSBORNE PARK W.A. 6017
PH : +6108 9446 8044
EMAIL: sales@gsindustries.com.au
WEB: www.gsindustries.com.au

PROPRIETARY AND CONFIDENTIAL

THE INFORMATION CONTAINED IN THIS
DRAWING IS THE SOLE PROPERTY OF G&S
INDUSTRIES. ANY REPRODUCTION IN PART OR
AS A WHOLE WITHOUT THE WRITTEN
PERMISSION OF G&S INDUSTRIES IS PROHIBITED.

SCALE: AS SHOWN

PRODUCT FINISH: H.D.G
(HOT DIPPED GALVANIZED)

PRODUCT WEIGHT: 5.5kg.

CUSTOMER APPROVAL:

CUSTOMER NAME / PROJECT:

NAME

DATE

PART NUMBER :

HF/60/S/600

DRAWN

N.C. A.

04.06.2020

CHECKED

RG

04.06.2020

REVISED

N.C. A.

30.06.2020

TITLE :

**600D STREETLIGHTING
SINGLE HEADFRAME
WITH 600MM OUTREACH ARM**

COPYRIGHT

THIS DOCUMENT IS PRODUCED BY G&S INDUSTRIES
MUST NOT BE COPIED, TRACED, REPRODUCED,
OR LENT WITHOUT WRITTEN CONSENT

SIZE

DWG. NO.

ZLRG2198A

REV.

0

SHEET 1 OF 1