

4

3

2

1

F

F

E

E

D

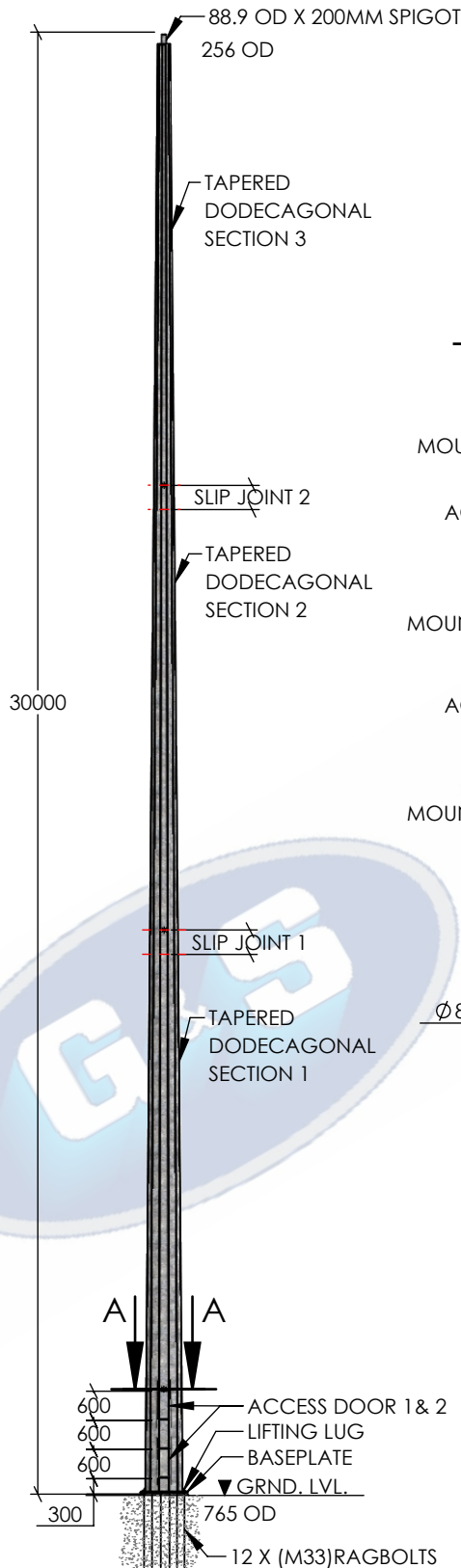
D

C

C

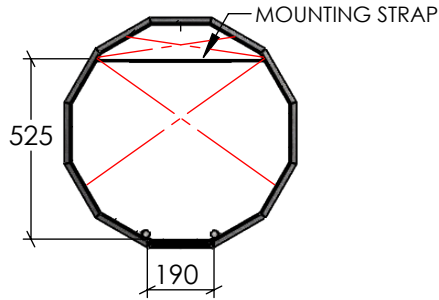
B

B



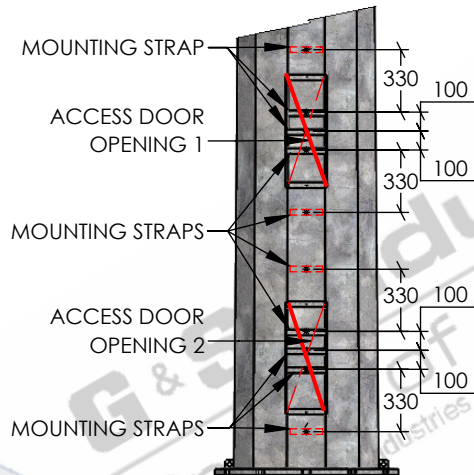
FRONT ELEVATION

SCALE 1:150



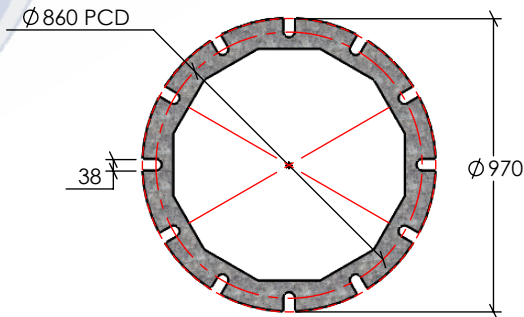
SECTION A-A CONTROL GEAR CLEARANCE DETAIL

SCALE 1:25



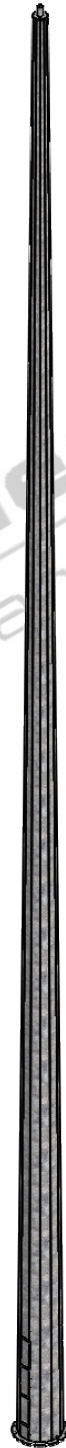
*DOOR REMOVED FOR CLARITY ELEVATION ON DOOR

SCALE 1:40



BASEPLATE DETAILS

SCALE 1:25



ISOMETRIC VIEW

SCALE 1:130

STANDARDS

ALL PRODUCTS TO CONFORM TO THE FOLLOWING AUSTRALIAN STANDARDS

- * AS 1554(set) Structural steel welding set.
- * AS 2159: Piling - Design & Installation.
- * AS 2870: Residential slab footings - Construction.
- * AS 3600: Concrete structures.
- * AS 3678: Structural steel - Hot rolled plates, floorplates and slabs.
- * AS 4680: Hot dip galvanized (Zinc) Coatings on fabricated ferrous articles.
- * AS/NZS 4671: Steel reinforcing materials.
- * AS/NZS 4676: Structural design requirements for utility services poles.



G&S Industries
Group of Companies

97 GUTHRIE STREET,
OSBORNE PARK W.A. 6017
PH : +6108 9446 8044

EMAIL: sales@gsindustries.com.au
WEB: www.gsindustries.com.au

PROPRIETARY AND CONFIDENTIAL

THE INFORMATION CONTAINED IN THIS DRAWING IS THE SOLE PROPERTY OF G&S INDUSTRIES. ANY REPRODUCTION IN PART OR AS A WHOLE WITHOUT THE WRITTEN PERMISSION OF G&S INDUSTRIES IS PROHIBITED.

SCALE: AS SHOWN

PRODUCT FINISH: H.D.G
(HOT DIPPED GALVANIZED)

PRODUCT WEIGHT: 2846kg.

CUSTOMER APPROVAL:

CUSTOMER NAME / PROJECT:

NAME

DATE

PART NUMBER :

F30BHH

DRAWN

N.C. A.

04.06.2020

CHECKED

RG

04.06.2020

REVISED

N.C. A.

30.06.2020

REVISED

N.C. A.

21.07.2022

TITLE :

**30M HEAVY DUTY FIXED
BASE MOUNTED
TAPERED DODECAGONAL POLE**

SIZE

DWG. NO.

ZLRG2058B

REV.

1

COPYRIGHT
THIS DOCUMENT IS PRODUCED BY G&S INDUSTRIES
MUST NOT BE COPIED, TRACED, REPRODUCED,
OR LENT WITHOUT WRITTEN CONSENT

SHEET 1 OF 1

4

3

2

1

A

A