

4

3

2

1

F

F

E

E

D

D

C

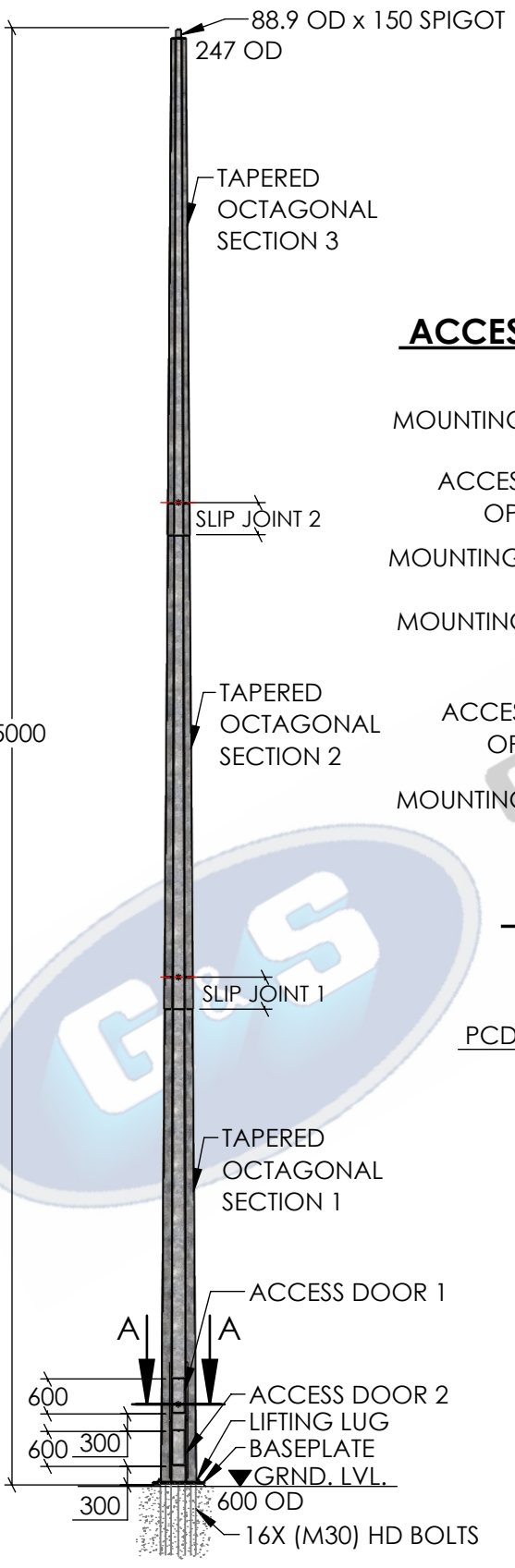
C

B

B

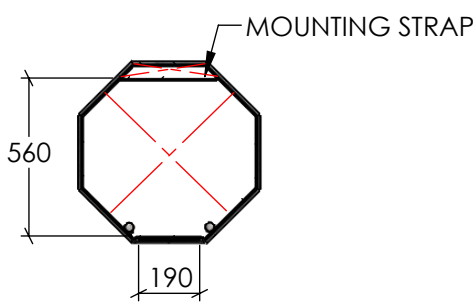
A

A



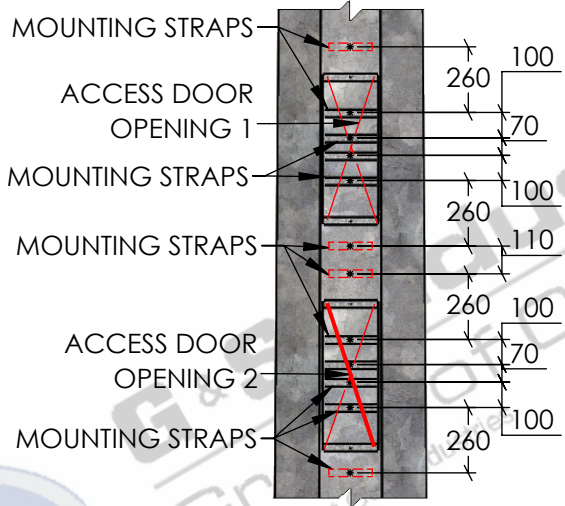
**FRONT ELEVATION**

SCALE 1:120



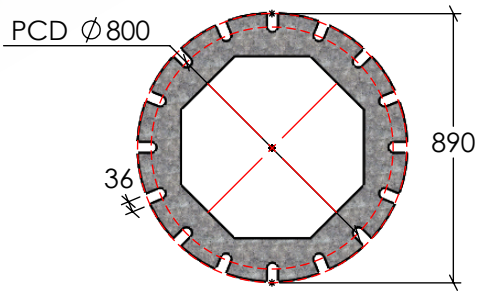
**SECTION A-A ACCESS DOOR CLEARANCE DETAIL**

SCALE 1:25



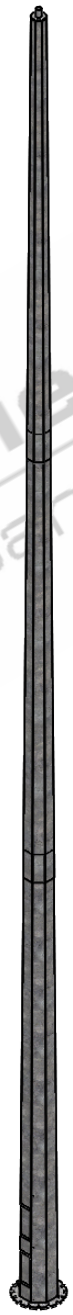
**ELEVATION ON DOOR**

SCALE 1:40



**BASEPLATE DETAILS**

SCALE 1:25



**ISOMETRIC VIEW**

SCALE 1:120

STANDARDS ALL PRODUCTS TO CONFORM TO THE FOLLOWING AUSTRALIAN STANDARDS

- \* AS 1554(set) Structural steel welding set.
- \* AS 2159: Piling - Design & Installation.
- \* AS 2870: Residential slab footings - Construction.
- \* AS 3600: Concrete structures.
- \* AS 3678: Structural steel - Hot rolled plates, floorplates and slabs.
- \* AS 4680: Hot dip galvanized (Zinc) Coatings on fabricated ferrous articles.
- \* AS/NZS 4671: Steel reinforcing materials.
- \* AS/NZS 4676: Structural design requirements for utility services poles.



**G&S Industries**  
Group of Companies  
97 GUTHRIE STREET,  
OSBORNE PARK W.A. 6017  
PH : +6108 9446 8044  
EMAIL: sales@gsindustries.com.au  
WEB: www.gsindustries.com.au

<b>PROPRIETARY AND CONFIDENTIAL</b>	
THE INFORMATION CONTAINED IN THIS DRAWING IS THE SOLE PROPERTY OF G&S INDUSTRIES. ANY REPRODUCTION IN PART OR AS A WHOLE WITHOUT THE WRITTEN PERMISSION OF G&S INDUSTRIES IS PROHIBITED.	
SCALE: AS SHOWN	PRODUCT WEIGHT: 1572kg.
PRODUCT FINISH: H.D.G (HOT DIPPED GALVANIZED)	CUSTOMER APPROVAL:
CUSTOMER NAME / PROJECT:	

NAME	DATE
DRAWN N.C. A.	04.06.2020
CHECKED RG	04.06.2020
REVISED N.C. A.	30.06.2020
<b>COPYRIGHT</b>	
THIS DOCUMENT IS PRODUCED BY G&S INDUSTRIES MUST NOT BE COPIED, TRACED, REPRODUCED, OR LENT WITHOUT WRITTEN CONSENT	

PART NUMBER :	<b>F25BHH</b>
TITLE :	<b>25M HEAVY DUTY FIXED BASE MOUNTED TAPERED OCTAGONAL POLE</b>
SIZE DWG. NO.	<b>A4 ZLRG2057B</b>
REV.	<b>0</b>

4

3

2

1