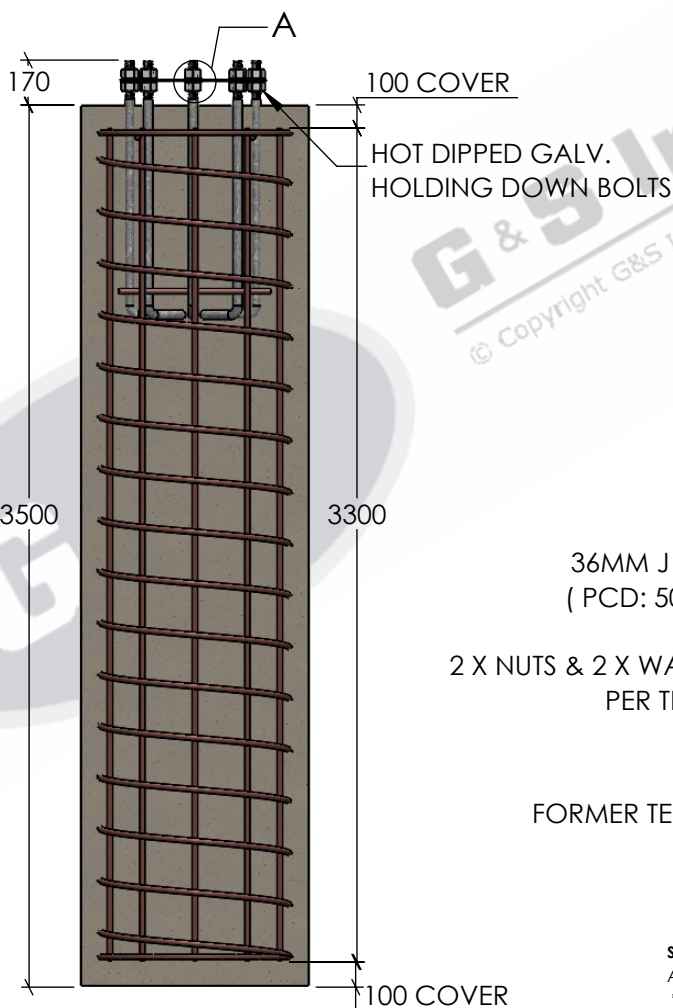


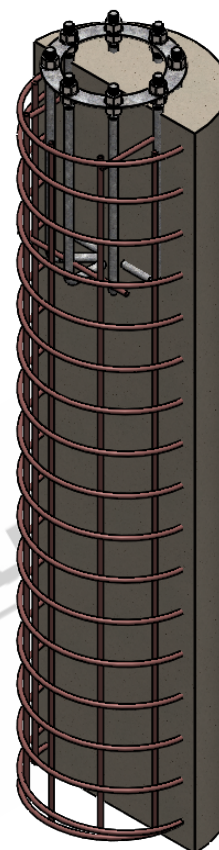
TOP VIEW

SCALE 1:20



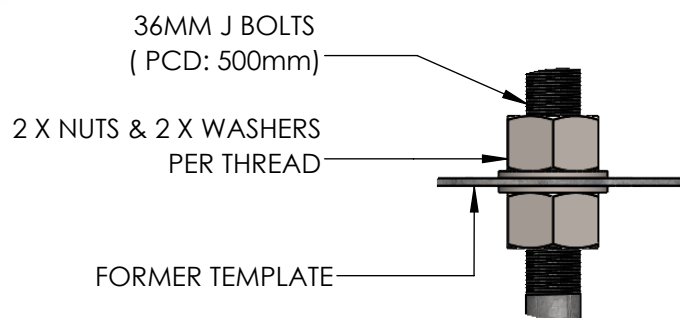
SIDE ELEVATION

SCALE 1:30



ISOMETRIC ELEVATION

SCALE 1:30



DETAIL A
SCALE 1:5

STANDARDS

ALL PRODUCTS TO CONFORM TO THE FOLLOWING AUSTRALIAN STANDARDS.

- * AS 1170.2 Structural design actions - Wind actions.
- * AS 1554(set) Structural steel welding set.
- * AS 2159: Piling - Design & Installation.
- * AS 2870: Residential slab footings - Construction.
- * AS 3600: Concrete structures.
- * AS 3678: Structural steel - Hot rolled plates, floorplates and slabs.
- * AS 4680: Hot dip galvanized (Zinc) Coatings on fabricated ferrous articles.
- * AS/NZS 4671: Steel reinforcing materials.
- * AS/NZS 4600: Cold formed steel structures.

**PILE & CAGE LENGTH MAY VARY WITH SOIL TYPE.
CONCRETE POURED ON SITE. RECOMMENDED STRENGTH 32MPa.*



G & S Industries

97 GUTHRIE STREET,
OSBORNE PARK W.A. 6017
PH : +6108 9446 8044
EMAIL: sales@gsindustries.com.au
WEB: www.gsindustries.com.au

PROPRIETARY AND CONFIDENTIAL
THE INFORMATION CONTAINED IN THIS DRAWING IS THE SOLE PROPERTY OF G&S INDUSTRIES. ANY REPRODUCTION IN PART OR AS A WHOLE WITHOUT THE WRITTEN PERMISSION OF G&S INDUSTRIES IS PROHIBITED.

SCALE: AS SHOWN PRODUCT WEIGHT: 206.8kg
(NOT INCLUDING THE CONCRETE PILE)
PRODUCT FINISH: HOT DIPPED GALVANIZED

CUSTOMER APPROVAL:

CUSTOMER NAME / PROJECT:

| | NAME | DATE |
|----------|-------|------------|
| DRAWN | N. A. | 14.10.2022 |
| CHECKED | S. G. | 14.10.2022 |
| APPROVED | R. G. | 14.10.2022 |
| | | |
| | | |

COPYRIGHT
THIS DOCUMENT IS PRODUCED BY G&S INDUSTRIES
MUST NOT BE COPIED, TRACED, REPRODUCED,
OR LENT WITHOUT WRITTEN CONSENT

| | |
|---------------|---|
| PART NUMBER : | CR36/8/500 |
| TITLE : | 36MM (8 BOLT) 500 PCD CAGED RAGBOLT ASSEMBLY SUIT PILE TYPE FOOTING FULLY WELDED AND ASSEMBLED |

| | | |
|-----------|-----------------|----------|
| SIZE | DWG. NO. | REV. |
| A4 | ZLRG2246 | 0 |

SHEET 1 OF 1