

4

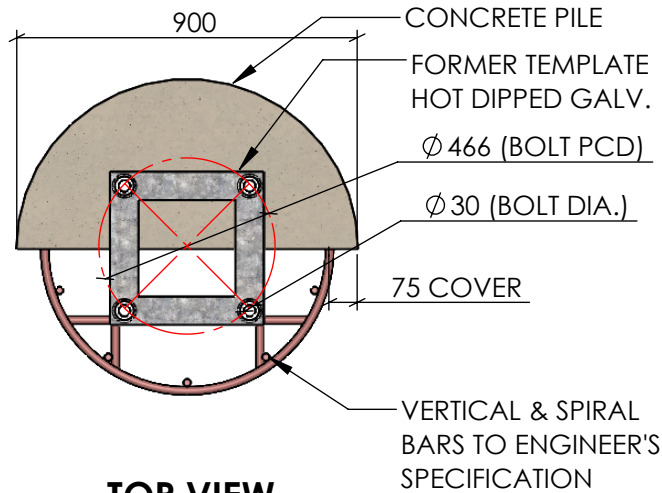
3

2

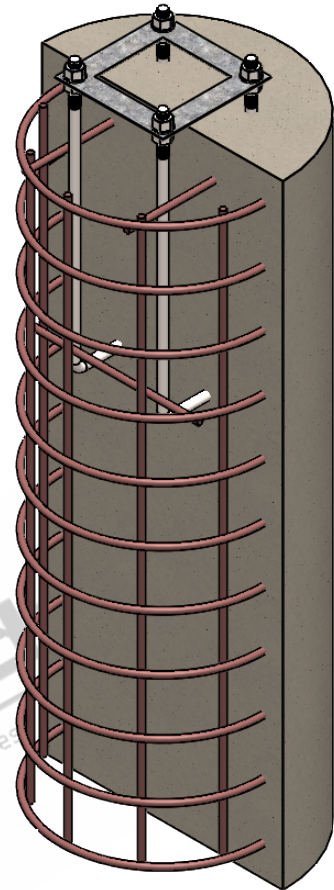
1

F

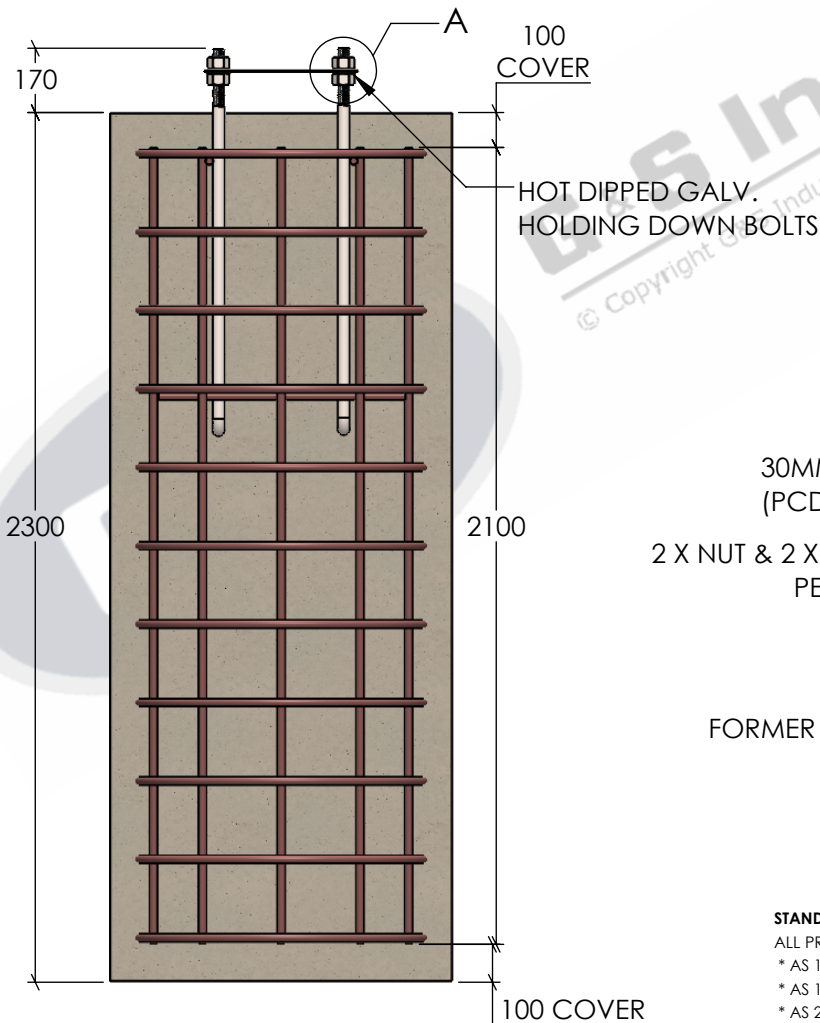
F

**TOP VIEW**

SCALE 1:10

**3D SECTION VIEW**

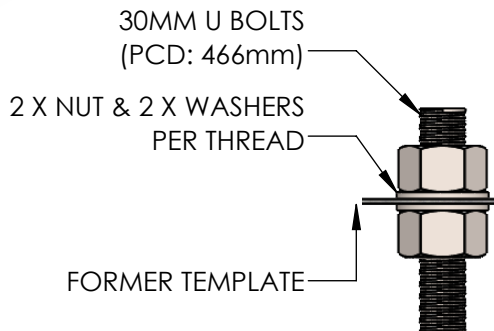
SCALE 1:20



*PILE & CAGE LENGTH MAY VARY WITH SOIL TYPE.
CONCRETE POURED ON SITE. RECOMMENDED STRENGTH 32MPa.

SIDE VIEW

SCALE 1:20



DETAIL A
SCALE 1 : 5

STANDARDS

ALL PRODUCTS TO CONFORM TO THE FOLLOWING AUSTRALIAN STANDARDS.

- * AS 1170.2 Structural design actions - Wind actions.
- * AS 1554(set) Structural steel welding set.
- * AS 2159: Piling - Design & Installation.
- * AS 2870: Residential slab footings - Construction.
- * AS 3600: Concrete structures.
- * AS 3678: Structural steel - Hot rolled plates, floorplates and slabs.
- * AS 4680: Hot dip galvanized (Zinc) Coatings on fabricated ferrous articles.
- * AS/NZS 4671: Steel reinforcing materials.
- * AS/NZS 4600: Cold formed steel structures.



G & S Industries

97 GUTHRIE STREET,
OSBORNE PARK W.A. 6017
PH : +6108 9446 8044
EMAIL: sales@gsindustries.com.au
WEB: www.gsindustries.com.au

PROPRIETARY AND CONFIDENTIAL

THE INFORMATION CONTAINED IN THIS DRAWING IS THE SOLE PROPERTY OF G&S INDUSTRIES. ANY REPRODUCTION IN PART OR AS A WHOLE WITHOUT THE WRITTEN PERMISSION OF G&S INDUSTRIES IS PROHIBITED.

SCALE: AS SHOWN PRODUCT WEIGHT: 107.4kg.
*NOT INCLUDING THE CONCRETE PILE

PRODUCT FINISH: HOT DIPPED GALVANIZED

CUSTOMER APPROVAL:

CUSTOMER NAME / PROJECT:

NAME

DATE

PART NUMBER :

CR30/4/466

DRAWN

N. A.

14.10.2022

CHECKED

S. G.

14.10.2022

APPROVED

R. G.

14.10.2022

COPYRIGHT

THIS DOCUMENT IS PRODUCED BY G&S INDUSTRIES
MUST NOT BE COPIED, TRACED, REPRODUCED,
OR LENT WITHOUT WRITTEN CONSENT

TITLE :
**30MM (4 BOLT) 466 PCD
CAGED RAGBOLT ASSEMBLY
SUIT PILE STYLE FOOTING
FULLY WELDED AND ASSEMBLED**

SIZE

DWG. NO.

ZLRG2241

REV.

0

SHEET 1 OF 1

4

3

2

1

A

A