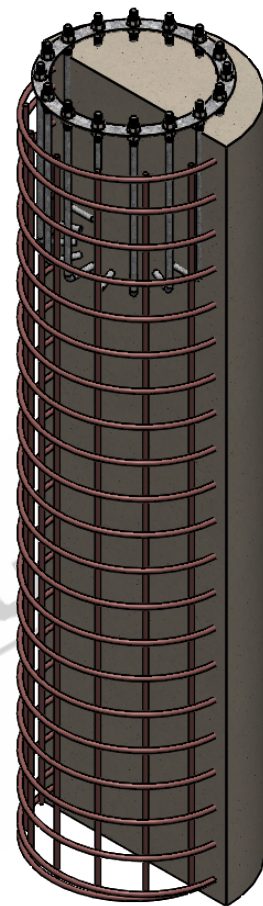
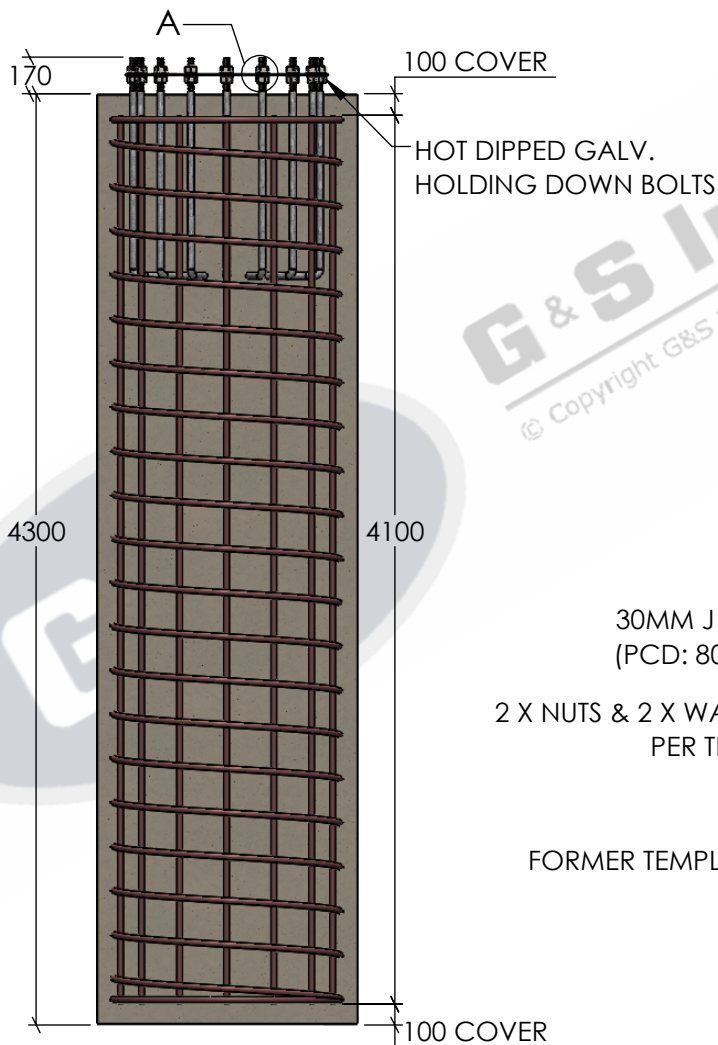


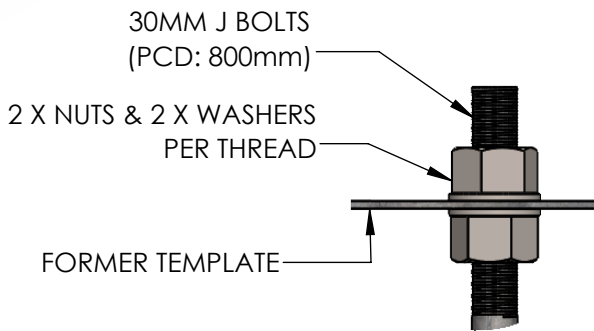
TOP VIEW
SCALE 1:30



ISOMETRIC ELEVATION
SCALE 1:30



SIDE VIEW
SCALE 1:35



DETAIL A
SCALE 1:5

*PILE & CAGE LENGTH MAY VARY WITH SOIL TYPE.
CONCRETE POURED ON SITE. RECOMMENDED STRENGTH 32MPa.

STANDARDS

- ALL PRODUCTS TO CONFORM TO THE FOLLOWING AUSTRALIAN STANDARDS.
- * AS 1170.2 Structural design actions - Wind actions.
- * AS 1554(set) Structural steel welding set.
- * AS 2159: Piling - Design & Installation.
- * AS 2870: Residential slab footings - Construction.
- * AS 3600: Concrete structures.
- * AS 3678: Structural steel - Hot rolled plates, floorplates and slabs.
- * AS 4680: Hot dip galvanized (Zinc) Coatings on fabricated ferrous articles.
- * AS/NZS 4671: Steel reinforcing materials.
- * AS/NZS 4600: Cold formed steel structures.

G & S Industries
97 GUTHRIE STREET,
OSBORNE PARK W.A. 6017
PH : +6108 9446 8044
EMAIL: sales@gsindustries.com.au
WEB: www.gsindustries.com.au

| | |
|--|---|
| PROPRIETARY AND CONFIDENTIAL | |
| THE INFORMATION CONTAINED IN THIS DRAWING IS THE SOLE PROPERTY OF G&S INDUSTRIES. ANY REPRODUCTION IN PART OR AS A WHOLE WITHOUT THE WRITTEN PERMISSION OF G&S INDUSTRIES IS PROHIBITED. | |
| SCALE: AS SHOWN | PRODUCT WEIGHT: 336kg. <small>*NOT INCLUDING THE CONCRETE PILE</small> |
| PRODUCT FINISH: HOT DIPPED GALVANIZED | |
| CUSTOMER APPROVAL: | |
| CUSTOMER NAME / PROJECT: | |

| | |
|---|------------|
| NAME | DATE |
| DRAWN N. A. | 14.10.2022 |
| CHECKED S. G. | 14.10.2022 |
| APPROVED R. G. | 14.10.2022 |
| COPYRIGHT | |
| THIS DOCUMENT IS PRODUCED BY G&S INDUSTRIES MUST NOT BE COPIED, TRACED, REPRODUCED, OR LENT WITHOUT WRITTEN CONSENT | |

| | |
|--|--------------------------|
| PART NUMBER : CR30/16/800 | |
| TITLE : 30MM (16 BOLT) 800 PCD CAGED RAGBOLT ASSEMBLY SUIT PILE TYPE FOOTING FULLY WELDED AND ASSEMBLED | |
| SIZE A4 | DWG. NO. ZLRG2397 |
| REV. 0 | |