

4

3

2

1

F

F

E

E

D

D

C

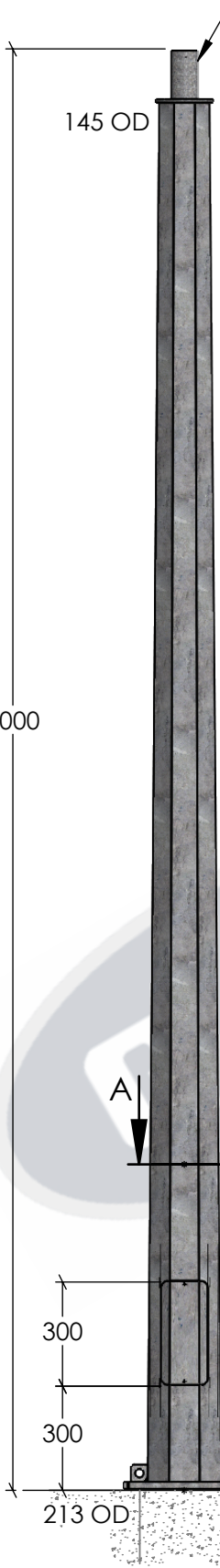
C

B

B

A

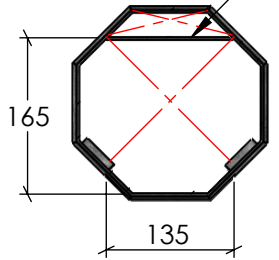
A



FRONT ELEVATION

SCALE 1:20

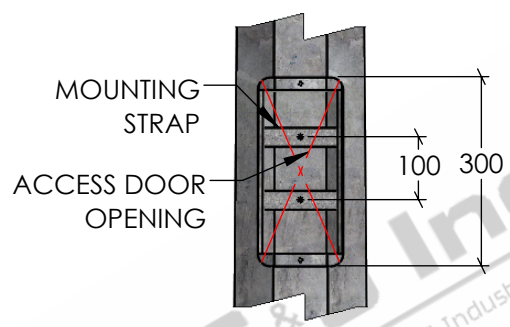
76.1MM OD X 150MM SPIGOT WITH INTERNAL CABLE SUPPORT BRACKET



SECTION A-A

ACCESS DOOR CLEARANCE DETAIL

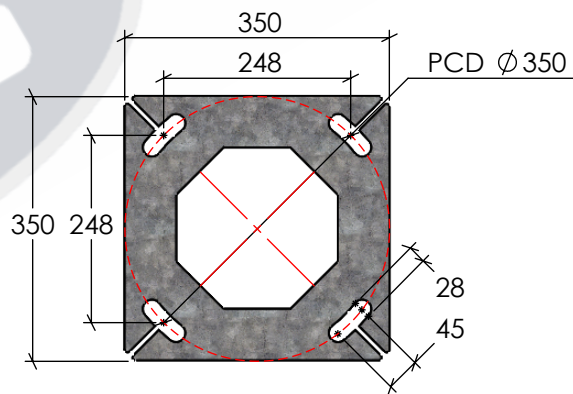
SCALE 1:8



*DOOR REMOVED FOR CLARITY

ELEVATION ON DOOR

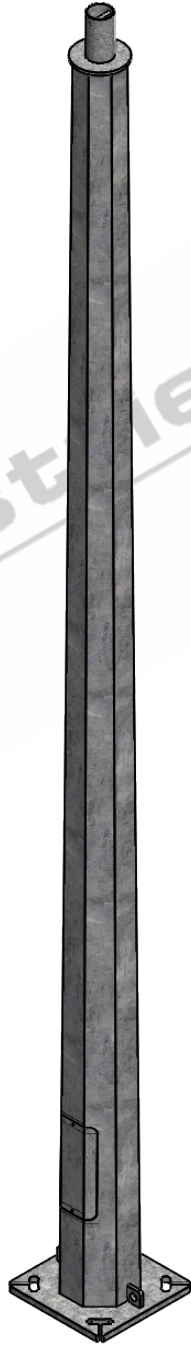
SCALE 1:12



20MM THK.

BASEPLATE DETAILS

SCALE 1:10



ISOMETRIC ELEVATION

SCALE 1:20

STANDARDS

- ALL PRODUCTS TO CONFORM TO THE FOLLOWING AUSTRALIAN STANDARDS.
- * AS 1170.2 Structural design actions - Wind actions.
- * AS 1554(set) Structural steel welding set.
- * AS 2159: Piling - Design & Installation.
- * AS 2870: Residential slab footings - Construction.
- * AS 3600: Concrete structures.
- * AS 3678: Structural steel - Hot rolled plates, floorplates and slabs.
- * AS 4680: Hot dip galvanized (Zinc) Coatings on fabricated ferrous articles.
- * AS/NZS 4671: Steel reinforcing materials.
- * AS/NZS 4600: Cold formed steel structures.

G & S Industries
 97 GUTHRIE STREET,
 OSBORNE PARK W.A. 6017
 PH : +6108 9446 8044
 EMAIL: sales@gsindustries.com.au
 WEB: www.gsindustries.com.au

PROPRIETARY AND CONFIDENTIAL
 THE INFORMATION CONTAINED IN THIS DRAWING IS THE SOLE PROPERTY OF G&S INDUSTRIES. ANY REPRODUCTION IN PART OR AS A WHOLE WITHOUT THE WRITTEN PERMISSION OF G&S INDUSTRIES IS PROHIBITED.

SCALE: AS SHOWN PRODUCT WEIGHT: 82kg.
 PRODUCT FINISH: HOT DIPPED GALVANIZED

CUSTOMER APPROVAL :
 CUSTOMER NAME / PROJECT :

	NAME	DATE	PART NUMBER : CCTV4BFM
DRAWN	N. A.	14.10.2022	
CHECKED	S. G.	14.10.2022	
APPROVED	R. G.	14.10.2022	
COPYRIGHT			TITLE : 4M MEDIUM DUTY FIXED TAPERED OCTAGONAL CCTV POLE
THIS DOCUMENT IS PRODUCED BY G&S INDUSTRIES MUST NOT BE COPIED, TRACED, REPRODUCED, OR LENT WITHOUT WRITTEN CONSENT			
SIZE A4	DWG. NO. ZLRG2134	REV. 0	SHEET 1 OF 1

4

3

2

1