

4

3

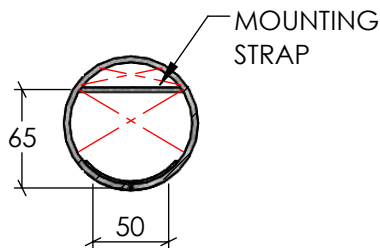
2

1

F

F

76OD X 150MM
SPIGOT



SECTION A-A

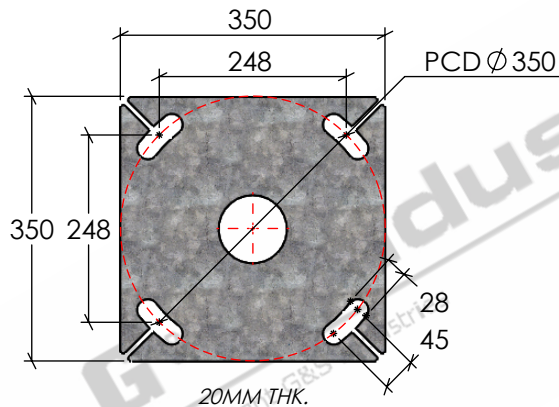
ACCESS DOOR CLEARANCE DETAIL

SCALE

1:5

E

E

**BASEPLATE DETAILS**

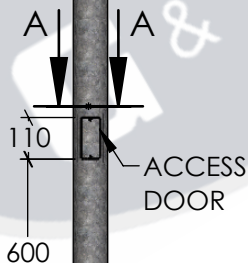
SCALE

1:10

D

D

3500
88.9 OD
POLE

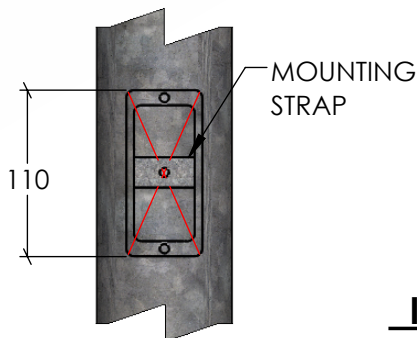
**FRONT ELEVATION**

SCALE

1:20

B

B



*DOOR REMOVED FOR CLARITY

ELEVATION ON DOOR

SCALE

1:5

ISOMETRIC ELEVATION

SCALE

1:20

STANDARDS

ALL PRODUCTS TO CONFORM TO THE FOLLOWING AUSTRALIAN STANDARDS.

- * AS 1170.2 Structural design actions - Wind actions.
- * AS 1554(set) Structural steel welding set.
- * AS 2159: Piling - Design & Installation.
- * AS 2870: Residential slab footings - Construction.
- * AS 3600: Concrete structures.
- * AS 3678: Structural steel - Hot rolled plates, floorplates and slabs.
- * AS 4680: Hot dip galvanized (Zinc) Coatings on fabricated ferrous articles.
- * AS/NZS 4671: Steel reinforcing materials.
- * AS/NZS 4600: Cold formed steel structures.

**G & S Industries**

97 GUTHRIE STREET,
OSBORNE PARK W.A. 6017
PH : +6108 9446 8044
EMAIL: sales@gsindustries.com.au
WEB: www.gsindustries.com.au

PROPRIETARY AND CONFIDENTIAL

THE INFORMATION CONTAINED IN THIS DRAWING IS THE SOLE PROPERTY OF G&S INDUSTRIES. ANY REPRODUCTION IN PART OR AS A WHOLE WITHOUT THE WRITTEN PERMISSION OF G&S INDUSTRIES IS PROHIBITED.

SCALE: AS SHOWN PRODUCT WEIGHT: 47.7kg.

PRODUCT FINISH: HOT DIPPED GALVANIZED

CUSTOMER APPROVAL:

CUSTOMER NAME / PROJECT:

NAME

DATE

PART NUMBER :

C88B3.5

DRAWN

N. A.

14.10.2022

CHECKED

S. G.

14.10.2022

APPROVED

R. G.

14.10.2022

TITLE :

**88.9MM OD X 3.5M
BASE MOUNTED CHS POLE**

COPYRIGHT

THIS DOCUMENT IS PRODUCED BY G&S INDUSTRIES
MUST NOT BE COPIED, TRACED, REPRODUCED,
OR LENT WITHOUT WRITTEN CONSENT

SIZE DWG. NO.

A4**ZLRG2091**REV.
0

SHEET 1 OF 1

A

A

4

3

2

1