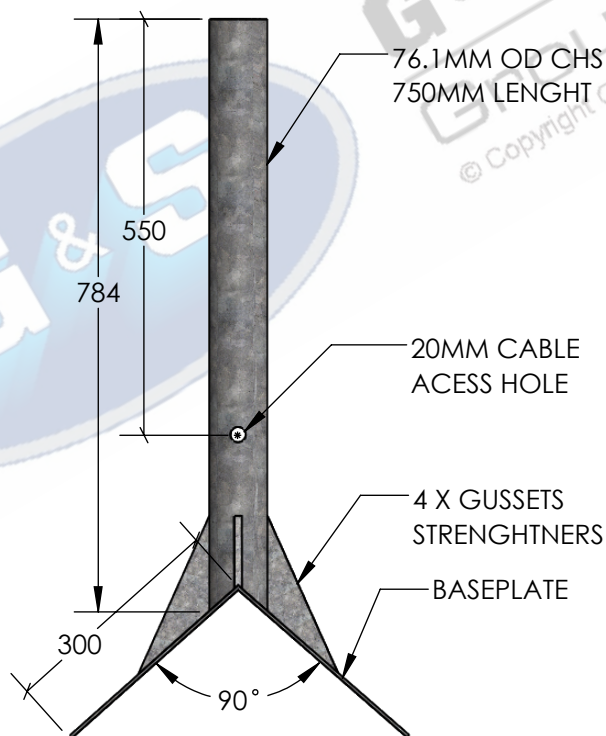


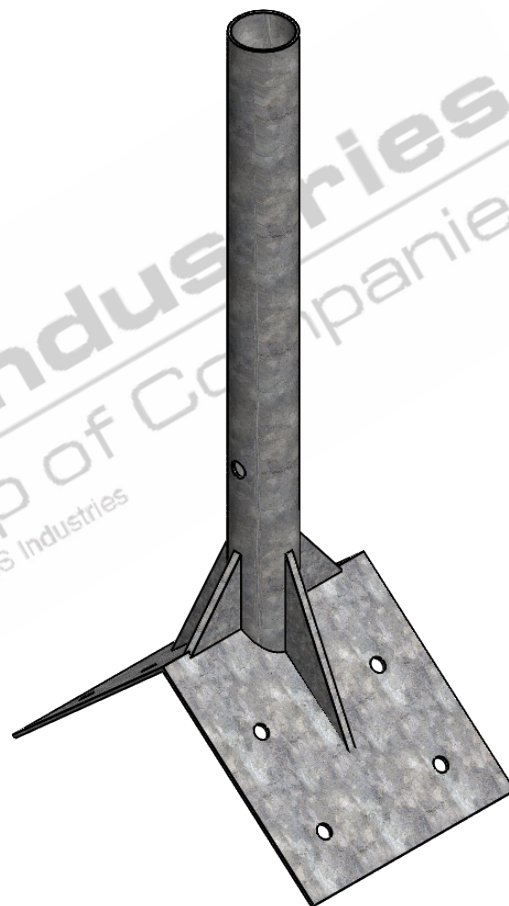
### TOP VIEW

SCALE 1:10



### SIDE ELEVATION

SCALE 1:10



### ISOMETRIC ELEVATION

SCALE 1:8

#### STANDARDS

ALL PRODUCTS TO CONFORM TO THE FOLLOWING AUSTRALIAN STANDARDS

- \* AS 1554(set) Structural steel welding set.
- \* AS 2159: Piling - Design & Installation.
- \* AS 2870: Residential slab footings - Construction.
- \* AS 3600: Concrete structures.
- \* AS 3678: Structural steel - Hot rolled plates, floorplates and slabs.
- \* AS 4680: Hot dip galvanized (Zinc) Coatings on fabricated ferrous articles.
- \* AS/NZS 4671: Steel reinforcing materials.
- \* AS/NZS 4676: Structural design requirements for utility services poles.



**G&S Industries**  
Group of Companies

97 GUTHRIE STREET,  
OSBORNE PARK W.A. 6017  
PH : +6108 9446 8044

EMAIL: sales@gsindustries.com.au  
WEB: www.gsindustries.com.au

#### PROPRIETARY AND CONFIDENTIAL

THE INFORMATION CONTAINED IN THIS DRAWING IS THE SOLE PROPERTY OF G&S INDUSTRIES. ANY REPRODUCTION IN PART OR AS A WHOLE WITHOUT THE WRITTEN PERMISSION OF G&S INDUSTRIES IS PROHIBITED.

SCALE: AS SHOWN

PRODUCT FINISH: H.D.G  
(HOT DIPPED GALVANIZED)

PRODUCT WEIGHT: 15.3kg.

CUSTOMER APPROVAL:

CUSTOMER NAME / PROJECT:

NAME

DATE

PART NUMBER :

**BM02**

DRAWN

N.C. A.

04.06.2020

CHECKED

RG

04.06.2020

REVISED

N.C. A.

30.06.2020

TITLE :

**BUILDING MOUNT BRACKET  
SUIT CCTV/COMMS/LIGHTING  
(CORNER MOUNTING)**

#### COPYRIGHT

THIS DOCUMENT IS PRODUCED BY G&S INDUSTRIES  
MUST NOT BE COPIED, TRACED, REPRODUCED,  
OR LENT WITHOUT WRITTEN CONSENT

SIZE

DWG. NO.

**ZLRG2544**

REV.

**0**

SHEET 1 OF 1