

1

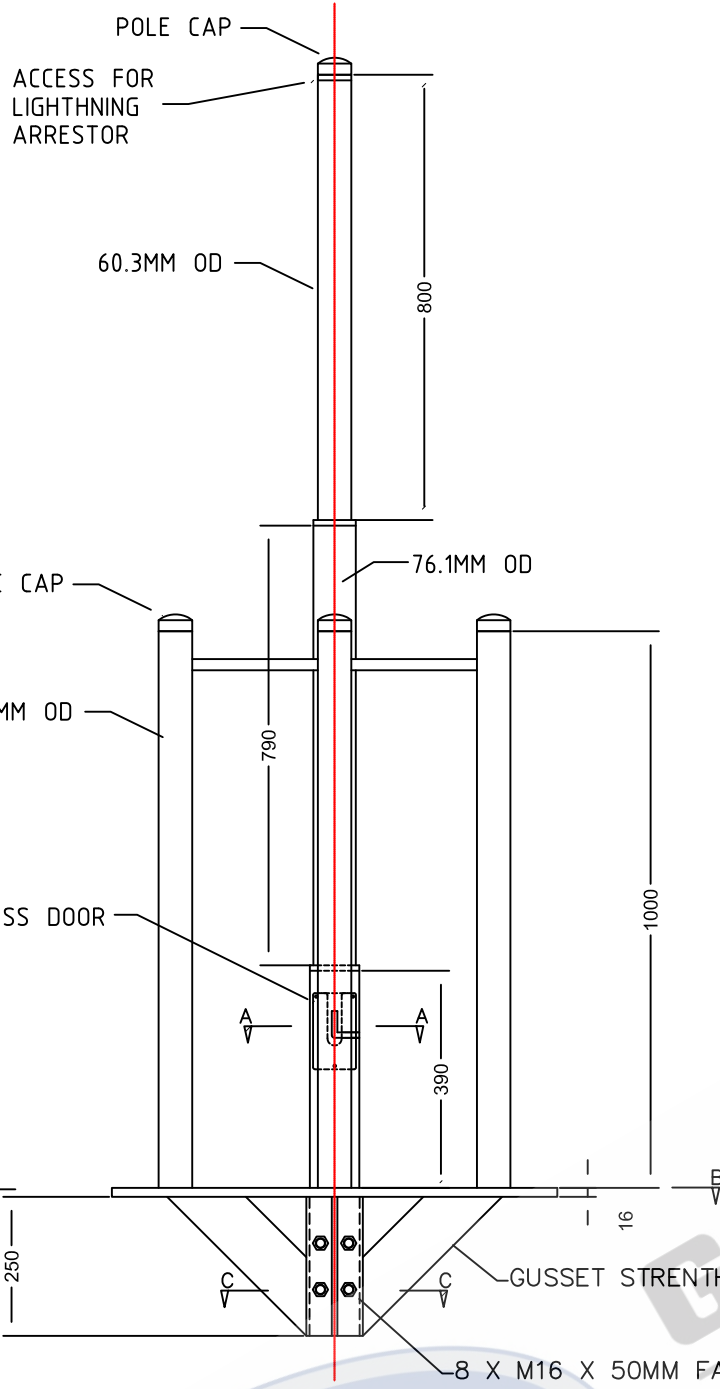
2

3

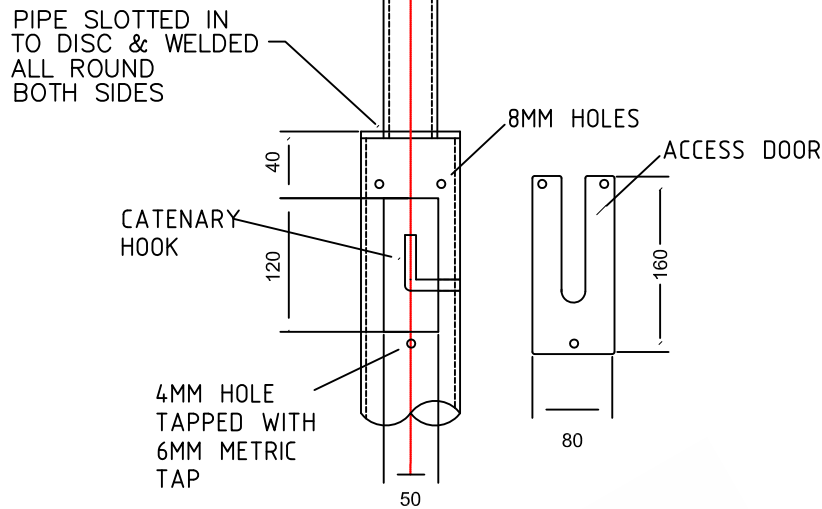
4

A

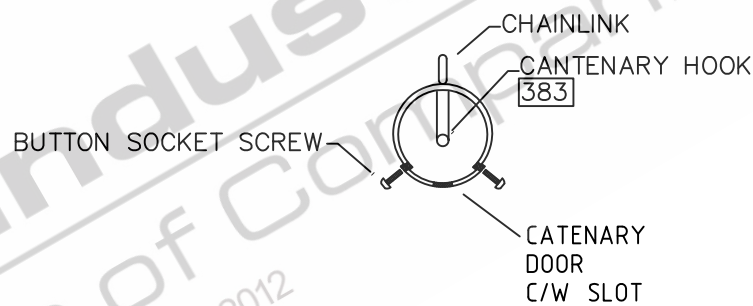
A



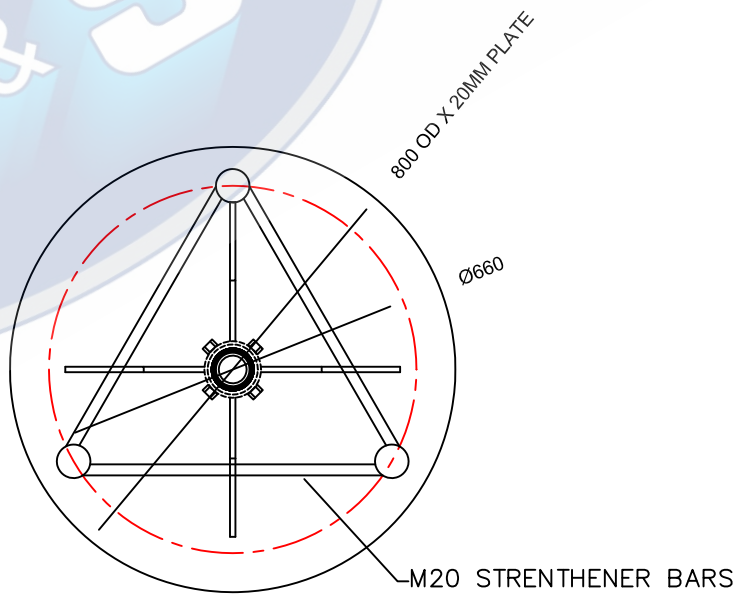
SIDE ELEVATION



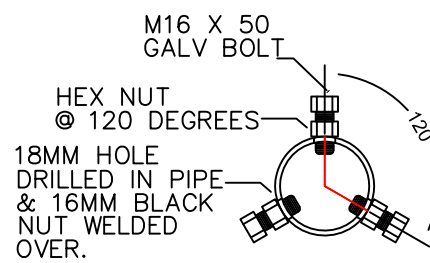
ACCESS CLEARANCE BACK TO BACK



SECTION A TOP VIEW



SECTION B TOP VIEW



SECTION C TOP VIEW

WEIGHT: 102KG's
SAIL AREA: 0.4496m²

- STANDARDS
ALL PRODUCTS TO CONFORM TO THE FOLLOWING AUSTRALIAN STANDARDS
- * AS 3678: 1990 Structural steel – hot rolled plates, floor plates and slabs. Grade 250 up to 3mm and Grade 300 on 4mm plate.
 - * AS 4680: 1999 Hot dipped galvanised (zinc) coating on fabricated ferrous articles.
 - * AS 1554 1:2004 Structural steel welding – Part 1: welding of steel structures.
 - * AS/NZS 1170 2:2002 Structural design actions – wind actions.
 - * AS/NZS 1170 2:2002/AMDT 1:2005-06-03 Structural design actions – wind actions.
 - * AS/NZS 4676:2000 Structural design requirements for utility service poles.



97 GUTHRIE STREET, OSBORNE PARK W.A. 6017
PH (08) 9446 8044. (08) 9446 8266
FAX (08) 9446 5456

JOB NO.	DATE:	DESIGN:	DRAWN:
2.0m MULTI ANTENNA SPIGOT AS2.0MULTI 720010A		Z.L.	Z.L.
		CHECKED:	APPROVED:
		R.G.	Y
		LAST REVISED:	SCALE:
		11 OCT '08	NTS
		DRAWING:	REVISION:
		ZLRG1542	01

1

2

3

4

D

D

C

C

B

B

A

A

E

E