

1

2

3

4

A

A

B

B

C

C

D

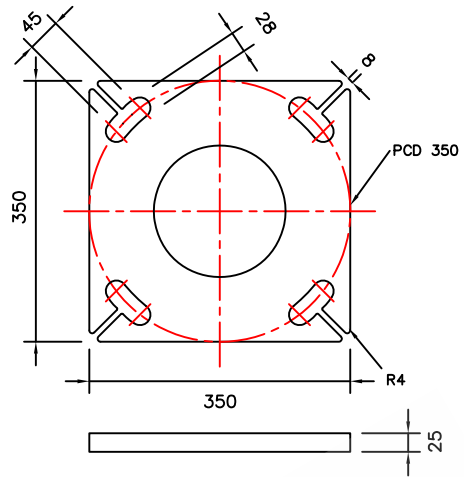
D

E

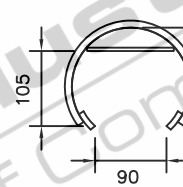
E

LIGHT FITTING  
SELECTED BY  
CUSTOMERS

CONCENTRIC  
REDUCER



**BASEPLATE DETAILS**



**CONTROL GEAR  
CLEARANCE DETAILS**

FLUSH MOUNTED  
ACCESS DOOR

CONCENTRIC  
REDUCER

BASEPLATE

**ELEVATION**

**G&S Industries**  
Group of Companies  
© Copyright G&S Industries 2012

**STANDARDS**  
ALL PRODUCTS TO CONFORM TO THE FOLLOWING AUSTRALIAN STANDARDS

- \* AS 1170.2: Structural design actions – Wind actions.
- \* AS 1302: Geometrical product specifications indication of surface texture in technical production documentation.
- \* AS 1554(set) Structural steel welding set.
- \* AS 2159: Piling – Design & Installation.
- \* AS 2870: Residential slab footings – Construction.
- \* AS 3600: Concrete structures.
- \* AS 3678: Structural steel – Hot rolled plates, floorplates and slabs.
- \* AS 4680: Hot dip galvanized (Zinc) Coatings on fabricated ferrous articles.
- \* AS/NZS 4671: Steel reinforcing materials.
- \* AS/NZS 4600: Cold formed steel structures.
- \* AS/NZS 4676: Structural design requirements for utility services poles.



G&S Industries

97 GUTHRIE STREET, OSBORNE PARK W.A. 6017  
PH (08) 9446 8044. (08) 9446 8266  
FAX (08) 9446 5456

JOB NO. \_\_\_\_\_ DATE: \_\_\_\_\_  
ARCHITECTURAL DECORATIVE  
ARIGNON  
640007

DESIGN:	S.G.	DRAWN:	Z.L.
CHECKED:	R.G.	APPROVED:	Y
LAST REVISED:	4 SEPT '06	SCALE:	NTS
DRAWING:	ZLRG2005	REVISION:	01

1

2

3

4