

1

2

3

4

A

A

B

B

C

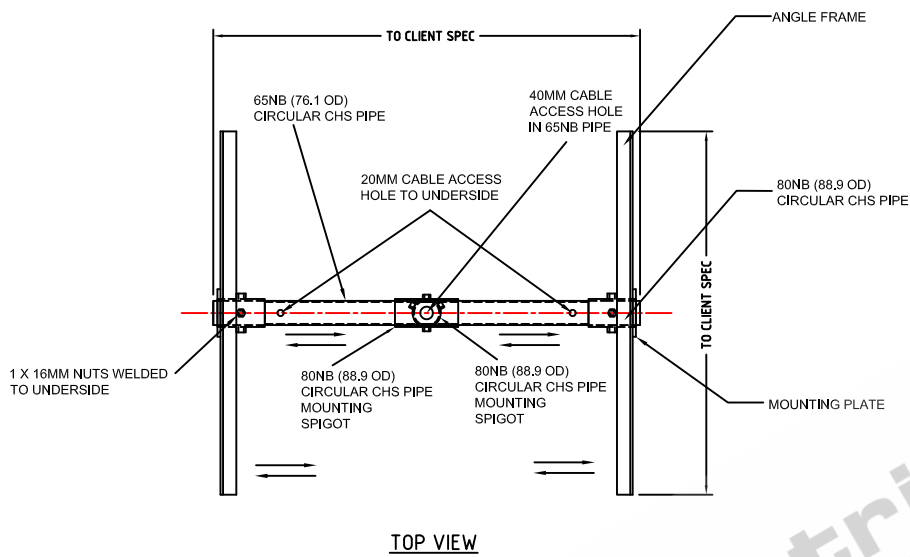
C

D

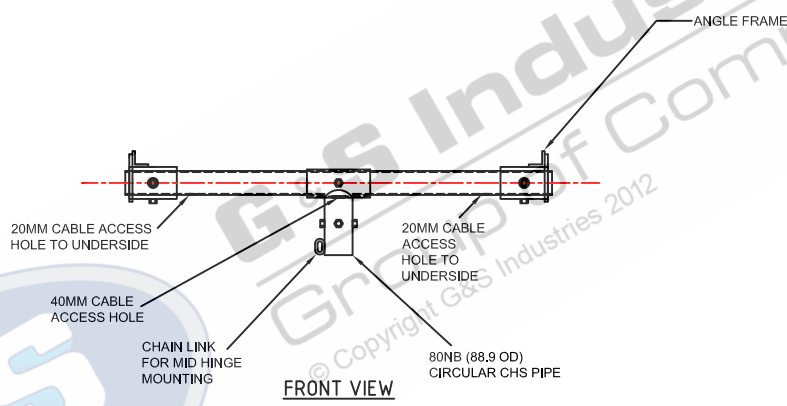
D

E

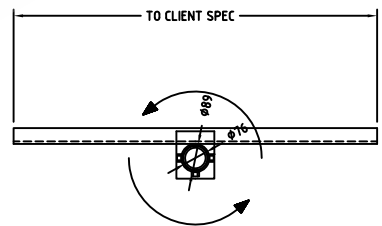
E



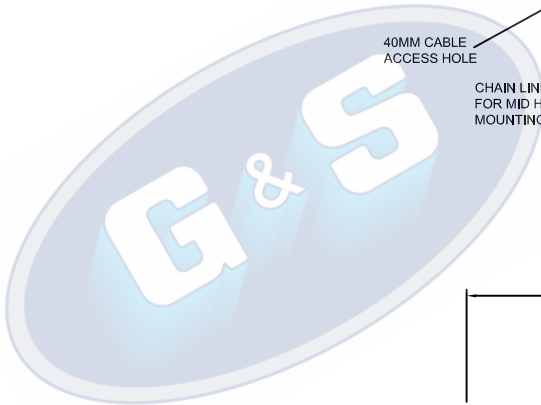
TOP VIEW



FRONT VIEW




SIDE VIEW



- STANDARDS**
ALL PRODUCTS TO CONFORM TO THE FOLLOWING AUSTRALIAN STANDARDS
- * AS 3678: 1990 Structural steel - hot rolled plates, floor plates and slabs. Grade 250 up to 3mm and Grade 300 on 4mm plate.
 - * AS 4680: 1999 Hot dipped galvanised (zinc) coating on fabricated ferrous articles.
 - * AS 1554 1:2004 Structural steel welding - Part 1: welding of steel structures.
 - * AS/NZS 1170 2:2002 Structural design actions - wind actions.
 - * AS/NZS 1170 2:2002/AMDT 1:2005-06-03 Structural design actions - wind actions.
 - * AS/NZS 4678:2000 Structural design requirements for utility service poles.

TOTAL EST WEIGHT OF FRAME 28KG'S

 G&S Industries 97 GUTHRIE STREET OSBORNE PARK W.A. 6017 PH. (08) 9446 8044, (08) 9446 8266 FAX (08) 9446 5456	JOB No	DATE:	DESIGN# RG	DRAW# RG
	SCFRAME SOLAR PANEL TOP FRAME 700007		CHECKED# SG	APPROVED Y
			LAST REVISED: 22 MAR 10	SCALE NTS
			DRAWING ZLRG1920B	REVISION 01

1

2

3

4