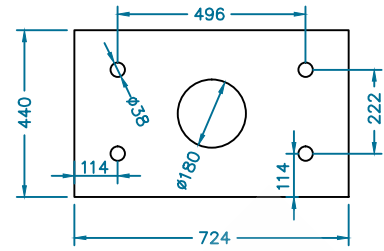
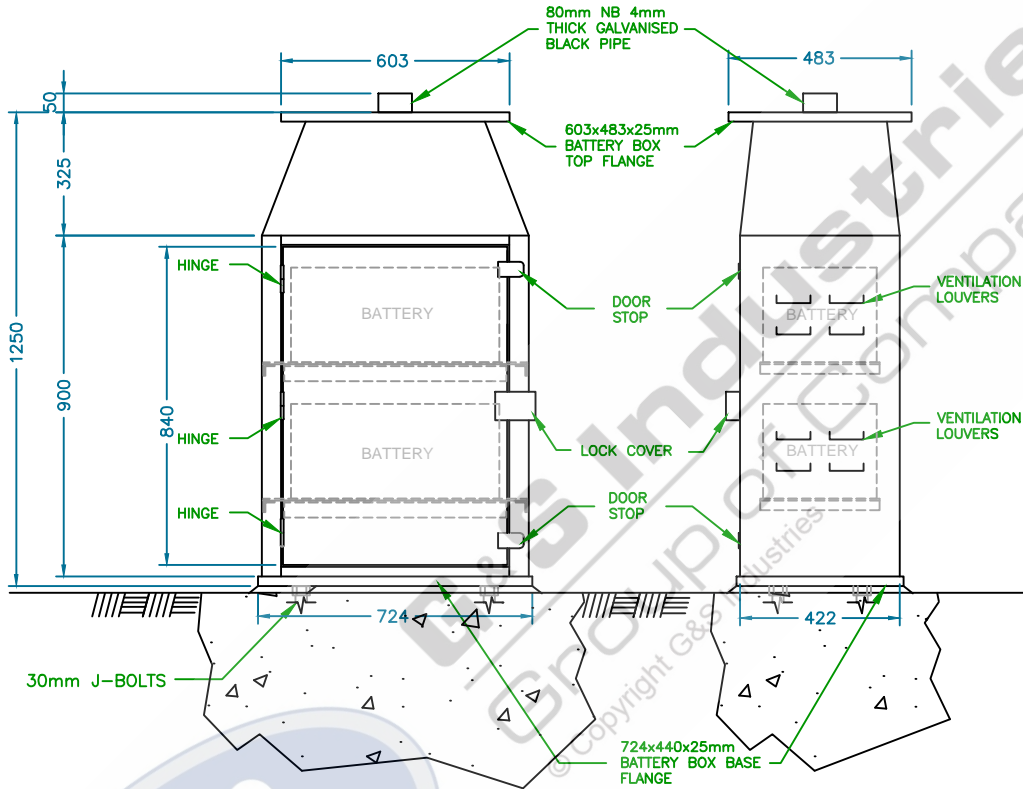


PLAN VIEW

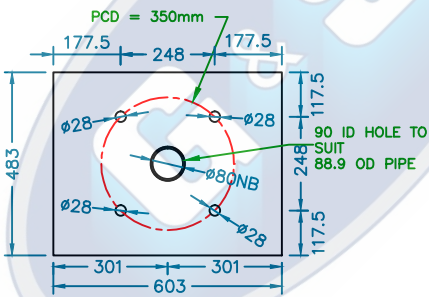


LOWER BASE PLATE
25mm THICK

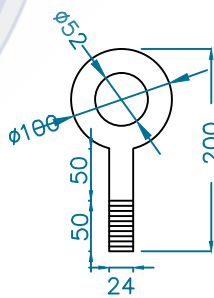


FRONT & SIDE ELEVATION

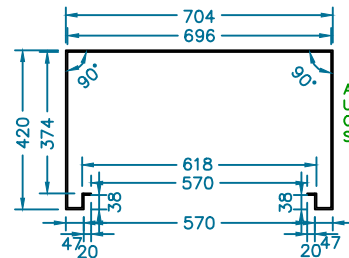
DOOR OPENING 570mm (W) x 805mm (H)
BOX DEPTH 374mm



TOP FLANGE PLATE
DETAILS
25mm THICK



SUPPLIED WITH 2 x 24mm
LIFTING EYE BOLTS - HOT DIPPED
GALVANIZED



BOX INTERNAL DIMENSIONS
696mm WIDE
374mm DEEP
900mm HIGH

ALL ANGLES 90°
UNLESS OTHERWISE
STATED

PRODUCT WEIGHT: 283.54kgs



G&S Industries

97 GUTHRIE STREET, OSBORNE PARK W.A 6017
PH (08) 9446 8044, (08) 9446 8266
FAX (08) 9446 5464

JOB No. ****	DATE: 21.05.13	DESIGN: RG	DRAWN: LW
SCBOX - LG LARGE SOLAR CONTROL BOX		CHECKED: RG	APPROVED: SG
GA DRAWING		LAST REVISED: ****	SCALE: NTS
		DRAWING: ZLRG1770	SHEET SIZE: A4
		REVISION: 0	SHEET: 1 OF 1