

1 2 3 4

A

A

B

B

C

C

D

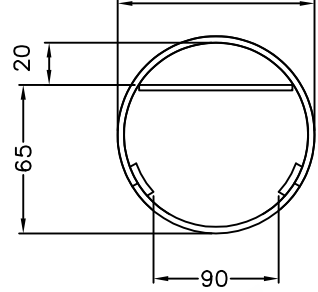
D

E

E

SPIGOT TO SUIT CLIENT APPLICATION
25 - 20 REDUCER CABLE ENTRY

Ø114.3 (COLUMN O.D)



DOOR CLEARANCES

114.3 OD GALVANISED PIPE

6500
5400

ACCESS DOOR WITH FUSE STRAP BEHIND

GROUND LEVEL

200 x 40mm CONDUIT SLOTS
1100

COLUMN WEIGHT: 79KG's

G & S Industries
Group of Companies
© Copyright G&S Industries 2012

- STANDARDS**
ALL PRODUCTS TO CONFORM TO THE FOLLOWING AUSTRALIAN STANDARDS
- * AS 1170.2: Structural design actions - Wind actions.
 - * AS 1302: Geometrical product specifications indication of surface texture in technical production documentation.
 - * AS 1554(set) Structural steel welding set.
 - * AS 2159: Piling - Design & Installation.
 - * AS 2870: Residential slab footings - Construction.
 - * AS 3600: Concrete structures.
 - * AS 3678: Structural steel - Hot rolled plates, floorplates and slabs.
 - * AS 4680: Hot dip galvanized (Zinc) Coatings on fabricated ferrous articles.
 - * AS/NZS 4671: Steel reinforcing materials.
 - * AS/NZS 4600: Cold formed steel structures.
 - * AS/NZS 4676: Structural design requirements for utility services poles.



97 GUTHRIE STREET OSBORNE PARK W.A. 6017
PH. (08) 9446 8044, (08) 9446 8266
FAX (08) 9446 5456

JOB No	DATE	DESIGN SG	DRAWN ZL
POST TOP COLUMN C114D6.5		CHECKED RG	APPROVED Y
114.3 OD		LAST REVISED: 4 SEPT '06	
6500mm		SCALE NTS	
650014		DRAWING ZLRG2108	REVISION 01

1 2 3 4