

1

2

3

4

A

A

B

B

C

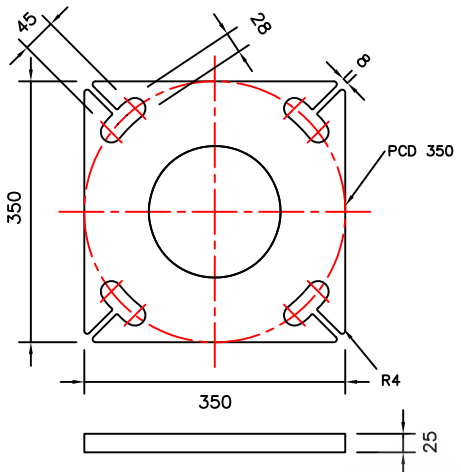
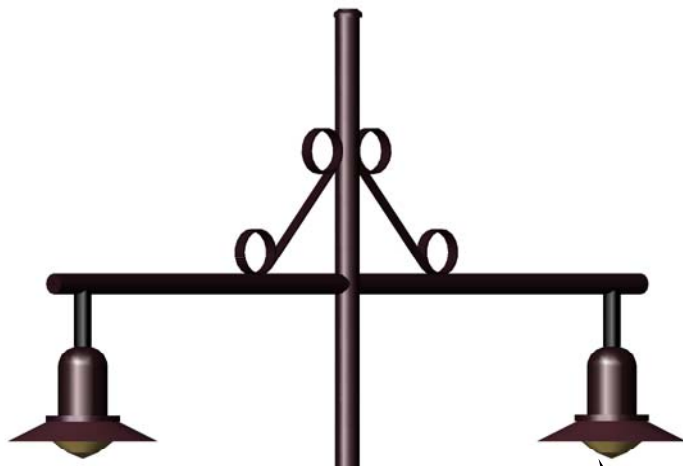
C

D

D

E

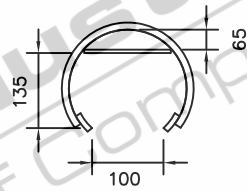
E



LIGHT FITTING  
SELECTED BY  
CUSTOMERS

**BASEPLATE DETAILS**

CONCENTRIC  
REDUCER



**CONTROL GEAR  
CLEARANCE DETAILS**

CONCENTRIC  
REDUCER

16 SIDED  
BASE SECTION

FLUSH MOUNTED  
ACCESS DOOR

BASEPLATE

**ELEVATION**

**G&S Industries**  
Group of Companies  
© Copyright G&S Industries 2012

- STANDARDS**  
ALL PRODUCTS TO CONFORM TO THE FOLLOWING AUSTRALIAN STANDARDS
- \* AS 1170.2: Structural design actions – Wind actions.
  - \* AS 1302: Geometrical product specifications indication of surface texture in technical production documentation.
  - \* AS 1554(set): Structural steel welding set.
  - \* AS 2159: Piling – Design & Installation.
  - \* AS 2870: Residential slab footings – Construction.
  - \* AS 3600: Concrete structures.
  - \* AS 3678: Structural steel – Hot rolled plates, floorplates and slabs.
  - \* AS 4680: Hot dip galvanized (Zinc) Coatings on fabricated ferrous articles.
  - \* AS/NZS 4671: Steel reinforcing materials.
  - \* AS/NZS 4600: Cold formed steel structures.
  - \* AS/NZS 4676: Structural design requirements for utility services poles.



G&S Industries

97 GUTHRIE STREET, OSBORNE PARK W.A. 6017  
PH (08) 9446 8044. (08) 9446 8266  
FAX (08) 9446 5456

JOB NO. DATE:

ARCHITECTURAL DECORATIVE  
FLORENCE  
640011

DESIGN: S.G.

DRAWN: Z.L.

CHECKED: R.G.

APPROVED: Y

LAST REVISED: 4 SEPT '06

SCALE: NTS

DRAWING: ZLRG2009

REVISION: 01

1

2

3

4