

1

2

3

4

A

A

B

B

C

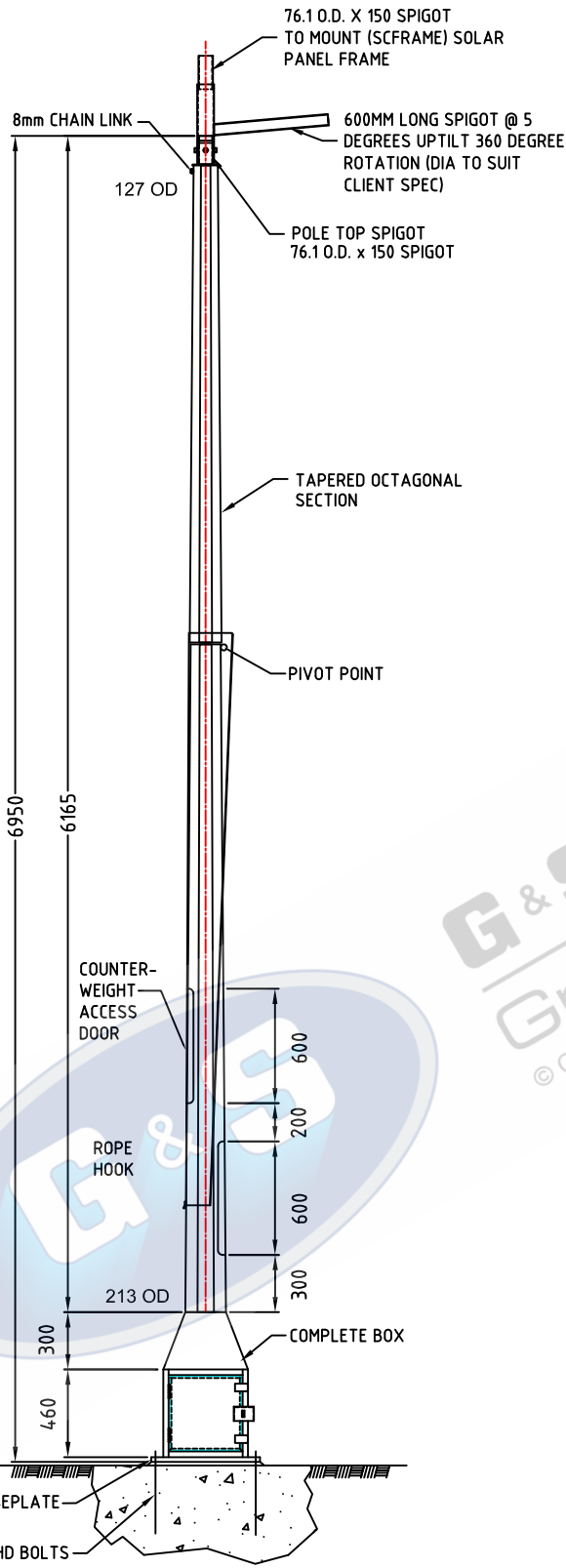
C

D

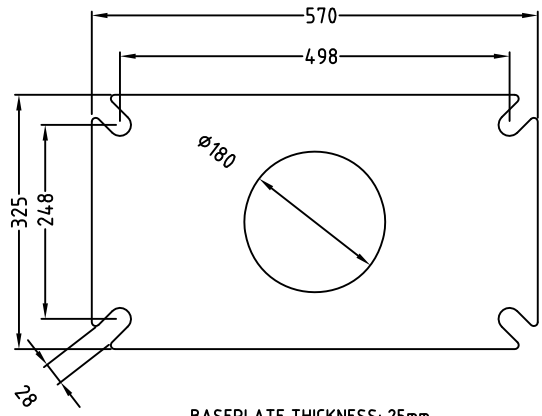
D

E

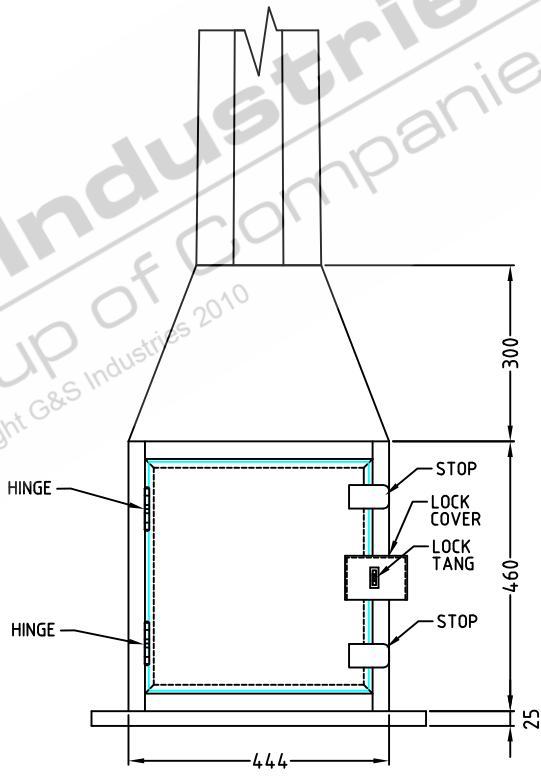
E



**FRONT ELEVATION**  
TOTAL WEIGHT OF COLUMN: 200.00KG'S



BASEPLATE THICKNESS: 25mm  
**BASEPLATE DETAILS**



**BOX DETAILS**  
DOOR OPENING 358MM(W) X 410MM(H)  
BOX DEPTH 282MM

- STANDARDS**  
ALL PRODUCTS TO CONFORM TO THE FOLLOWING AUSTRALIAN STANDARDS
- × AS 1170.2: Structural design actions - Wind actions.
  - × AS 1302: Geometrical product specifications indication of surface texture in technical production documentation.
  - × AS 1554(ae1): Structural steel welding set.
  - × AS 2159: Piling - Design & Installation.
  - × AS 2870: Residential slab footings - Construction.
  - × AS 3600: Concrete structures.
  - × AS 3678: Structural steel - Hot rolled plates, floorplates and slabs.
  - × AS 4680: Hot dip galvanized (Zinc) coatings on fabricated ferrous articles.
  - × AS/NZS 4675: Steel reinforcing materials.
  - × AS/NZS 4680: Cold formed steel structures.
  - × AS/NZS 4676: Structural design requirements for utility services poles.



97 GUTHRIE STREET, OSBORNE PARK W.A. 6017  
PH (08) 9446 8044, (08) 9446 8266  
FAX (08) 9446 5456

JOB NO.	DATE:	DESIGN:	S.G.	DRAWN:	Z.L.
6M MID HINGED TAPERED OCTAGONAL SOLAR COLUMN SC6BMH 700005		CHECKED:	R.G.	APPROVED:	Y
		LAST REVISED:	22 MAR '10	SCALE:	NTS
		DRAWING:	ZLRG2132N	REVISION:	02

1

2

3

4